

## **Enhanced Depth Imaging on Zeiss Cirrus Optical Coherence Tomography**

This new feature I have discovered in the Version 6 of the software allows one to focus the Optical Coherence Tomography scan deeper in to the retina, in fact into the choroid. This gives better visualisation of the deeper layers. A useful small feature that will be helpful in visualising the choroid.

Below on the next page is two images on the same patient taken with EDI off and the EDI on. You can see the difference in the clarity of the upper layers of the retina and lower parts between having EDI on and off.

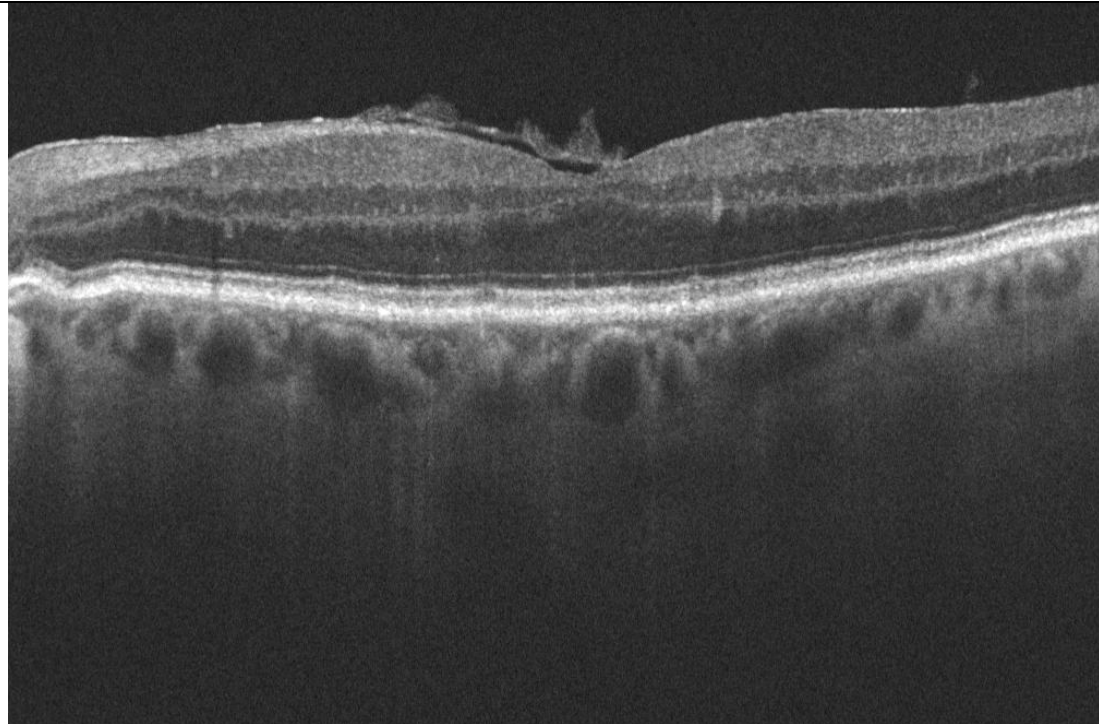
This is only available in the HD single scan image acquisition and has to be selected at the time of scanning.

Thus the operator has to know to use the deeper scan if needed. This works well if like myself as the clinician you are doing your own scans but if a technician is doing this then it has to be requested.

Just one of the small but noticeable enhancements in version 6

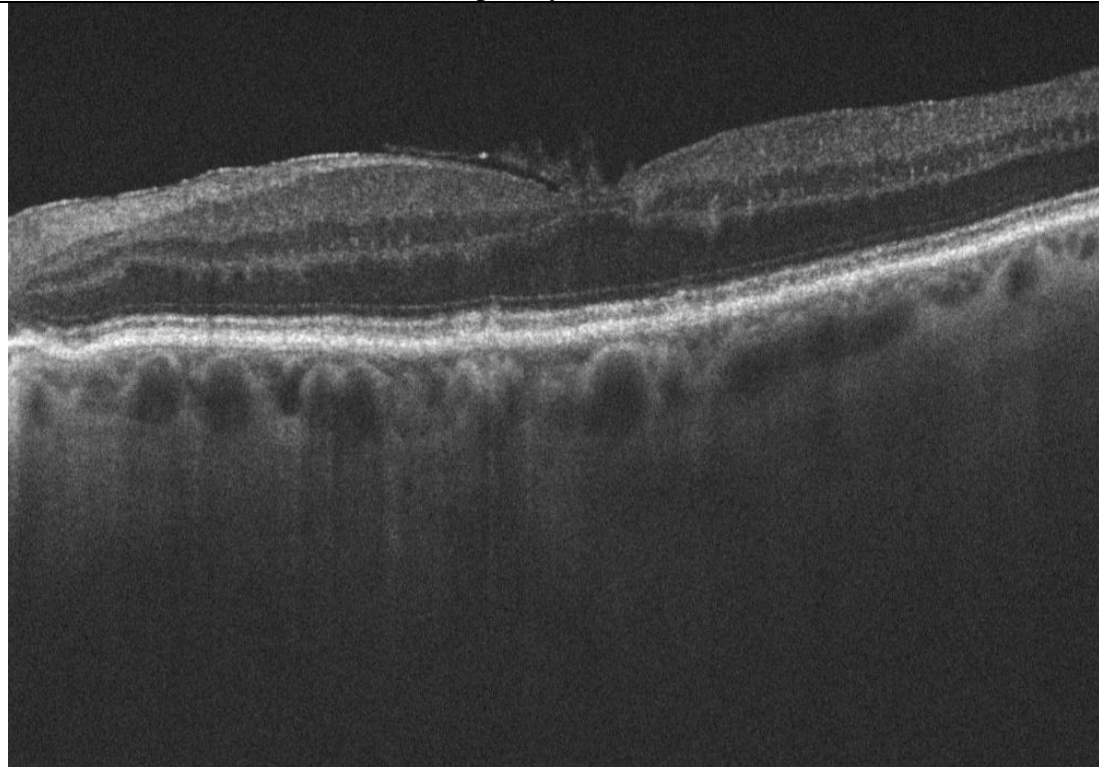
4/5/2012

Mr. Nicholas Lee  
Lead Ophthalmic Clinician at The Hillingdon Hospital  
Consultant Ophthalmologist at The Western Eye Hospital  
Mobile 07956 263804. Fax 01895 835404  
(NHS Net Email nicklee1@nhs.net)



Above is standard image focused on the superficial layers of the retina.

Below is the EDI focused on the deeper layers. More detail of the choroid is visible.



This document was created with Win2PDF available at <http://www.win2pdf.com>.  
The unregistered version of Win2PDF is for evaluation or non-commercial use only.  
This page will not be added after purchasing Win2PDF.