

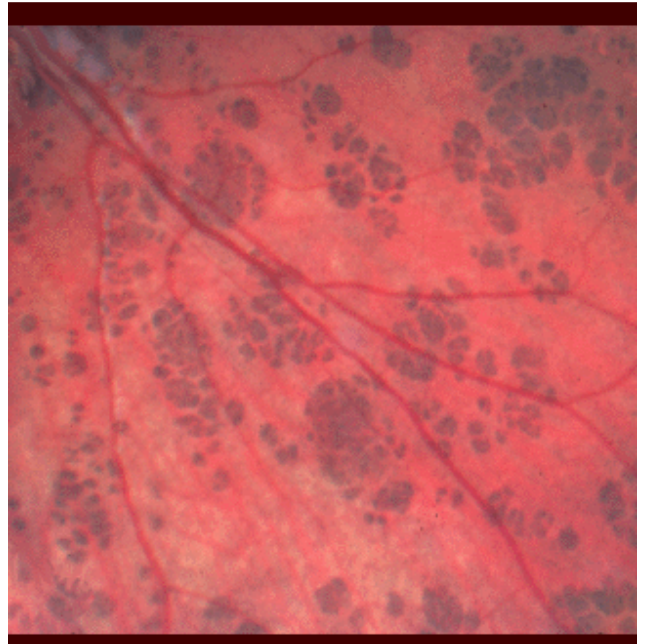
Bear Track Pigmentation

This is an usual are of pigmentation in the retina, usually in one eye in one part that resembles the foot prints of a bear, hence its name. It is thought to be part of the CHRPE (Congenital Hypertrophy of the Retinal Pigment epithelium) spectrum.

It just indicates an over abundance of black pigment in the retina and should not give you any concerns, but you should make your optician aware of this as they will note this in the eye when they examine you.

They can occur in conjunction with a condition called familial adenomatous polyposis and require further testing for colon and rectal cancer. This can be due to a dominant gene that is often seen to run in families as an predisposition to colon cancer.

Bear Tracks may be seen years before the cancer occurs so they may be a valuable preventative sign to your optometrist. Bear tracks may require a referral to a Gastroenterologist Doctor for further evaluation. Not every patient with Bear Tracks will get colon cancer, but it is more likely if they are large, present in both eyes, and there are more than 3 or 4 spots in each eye.



Isolated single CHRPE spots are not associated with Familial adenomatous polyposis or an increased risk of colon cancer.