

# How to tell the computer which network connection to connect to the internet

A problem I have is that my laptop can be connected via the cable plan or via the Wi-Fi adapter or even by the 4G USB dongle.

If only one of these has an Internet connection or one prefers to use a particular connection to access the Internet perhaps because the Wi-Fi has free Internet access and it is not obvious how to tell the computer which Internet connection to use.

This has foxed me and my friends for some time but today have found the solution which seems to work well.

The computer knows which Internet connection or technically known as which route to use first and IPv4 route table.

Your IPv4 route table can simply be brought up by starting a command prompt which in windows 10 is easily done by entering into the search windows the command "CMD".

Then in the command prompt "Route print"

Scroll into the table marked IPv4 shows a list similar to below.

The network destination 0.0.0.0 is an indication where Internet traffic should go. The gateway indicates the routers IP address through which such traffic will be sent and the final important column at the end called metric indicates which one the computer will use first.

The computer will use the line in the table which has the lowest metric value in preference to a higher value for those network destinations that are unknown in the table which is indicated by the lines 0.0.0.0.

```
Command Prompt
Microsoft Windows [Version 10.0.10586]
(c) 2015 Microsoft Corporation. All rights reserved.

C:\Users\Nick>route print
```

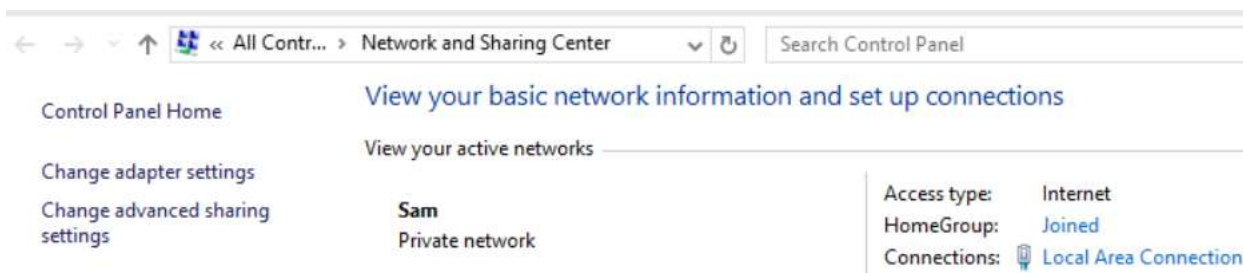
```
IPv4 Route Table
=====
```

Active Routes:

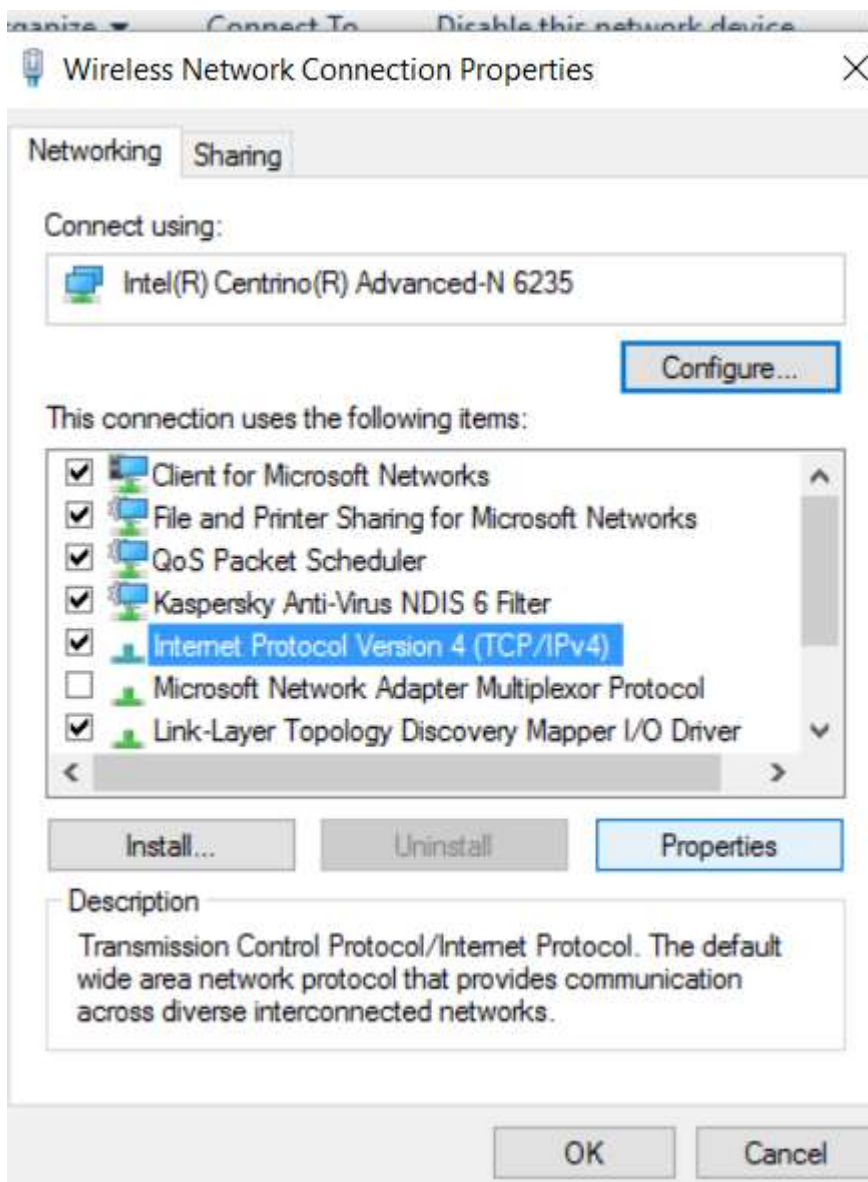
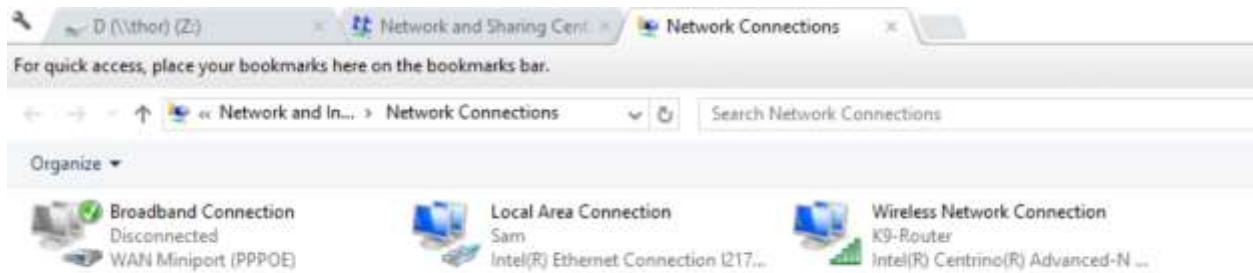
Network	Destination	Netmask	Gateway	Interface	Metric
	0.0.0.0	0.0.0.0	192.168.2.1	192.168.2.58	100
	0.0.0.0	0.0.0.0	192.168.2.149	192.168.2.100	4
	127.0.0.0	255.0.0.0	On-link	127.0.0.1	306
	127.0.0.1	255.255.255.255	On-link	127.0.0.1	306
	127.255.255.255	255.255.255.255	On-link	127.0.0.1	306
	192.168.2.0	255.255.255.0	On-link	192.168.2.58	306
	192.168.2.0	255.255.255.0	On-link	192.168.2.100	258

These metric values can easily be adjusted in the properties of the network adapters.

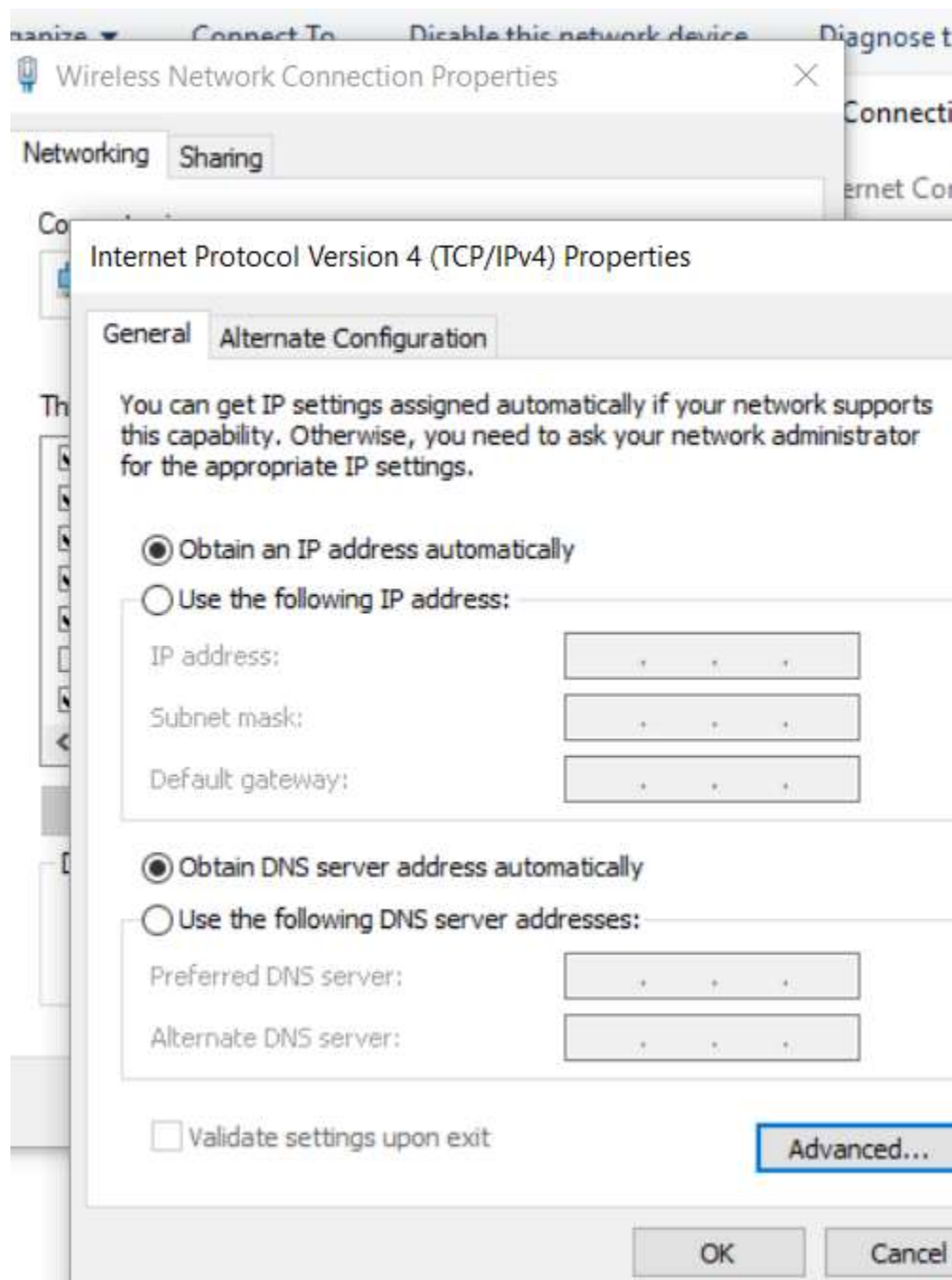
Type into the search Windows box "network and sharing Centre"



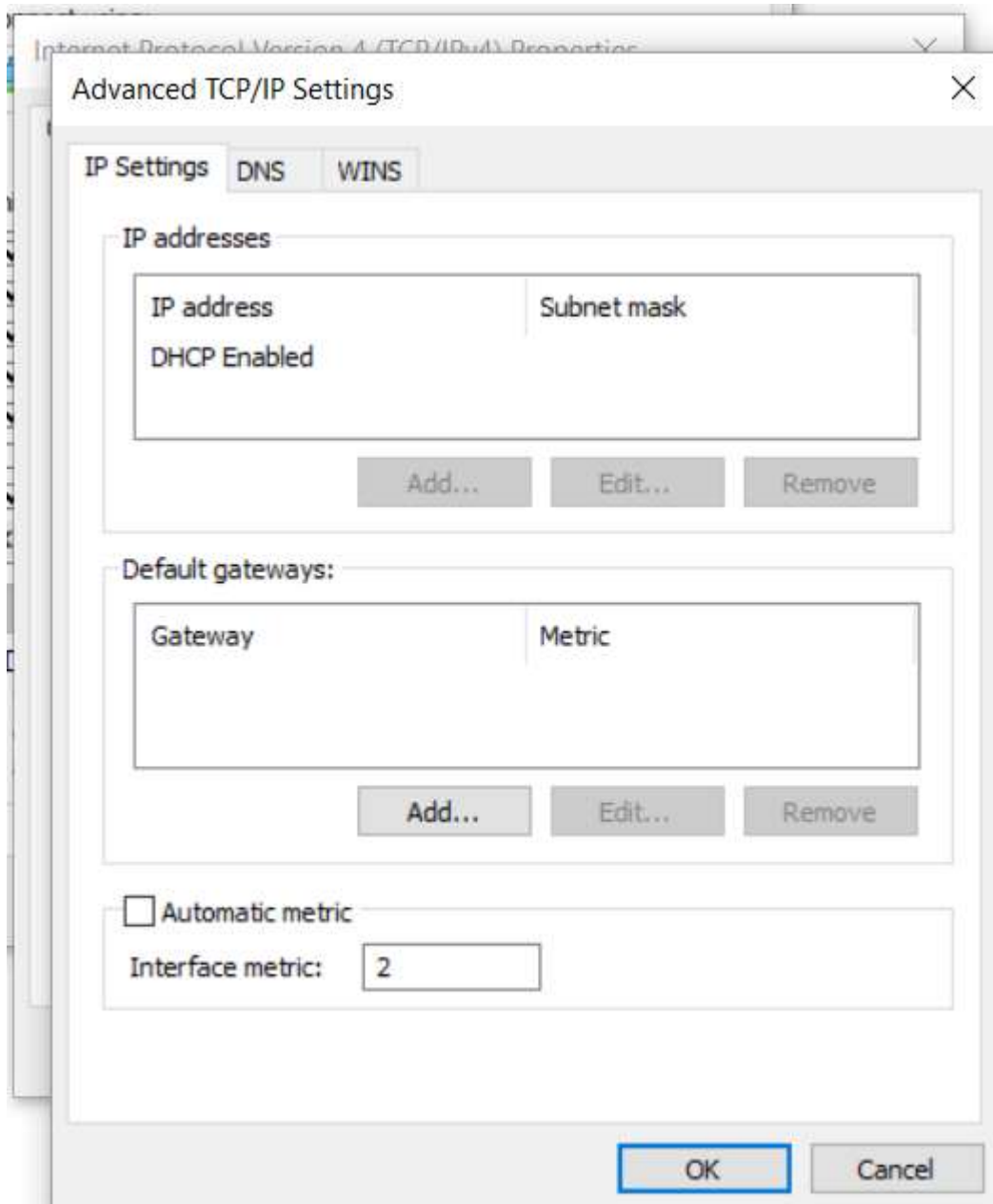
Then click on the change adapter settings to bring up your external network connections. And then right click the network connection you wish to prioritise and click on properties



Then select IPv4 and click properties



Then select advanced



And look for the bottom part automatic metric which will be usually ticked so that the computer decides the priorities.

Enter a number here. A low number such as 2 will mean that you are telling the computer this Internet connection has a very high speed indeed. If you then do the same for the other adapter and put a higher number in it or think the other adapter has a lower speed. The computer will always select the adapter with the highest speed which means in terms of metric the lower the number.

Close the box and you may well need to restart the computer for this to take effect.

Remember of course that when you go to a different environment you may need to repeat this process and adjust the metrics according to the new environment.

It is generally best to leave it on automatic with a computer to decide the fastest speed but at least you have now know how to control which connection you made to the computer is used to your Internet traffic.

Nicholas Lee 2016