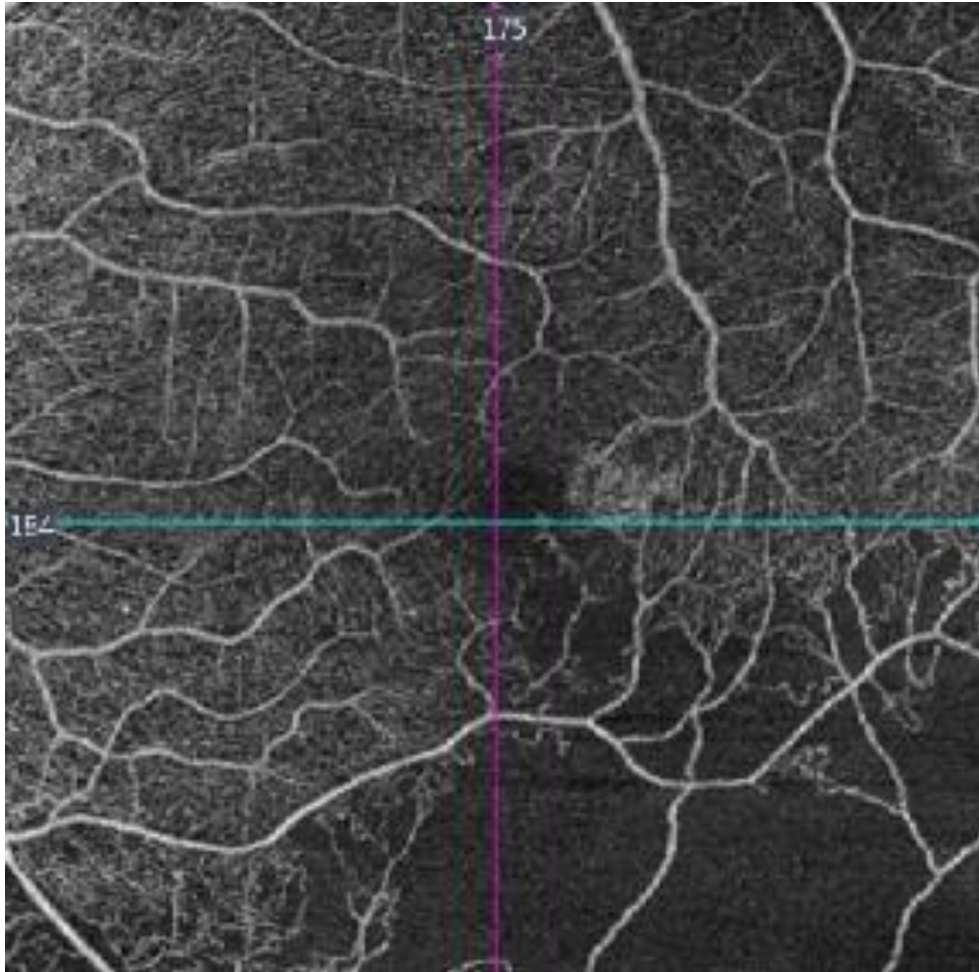
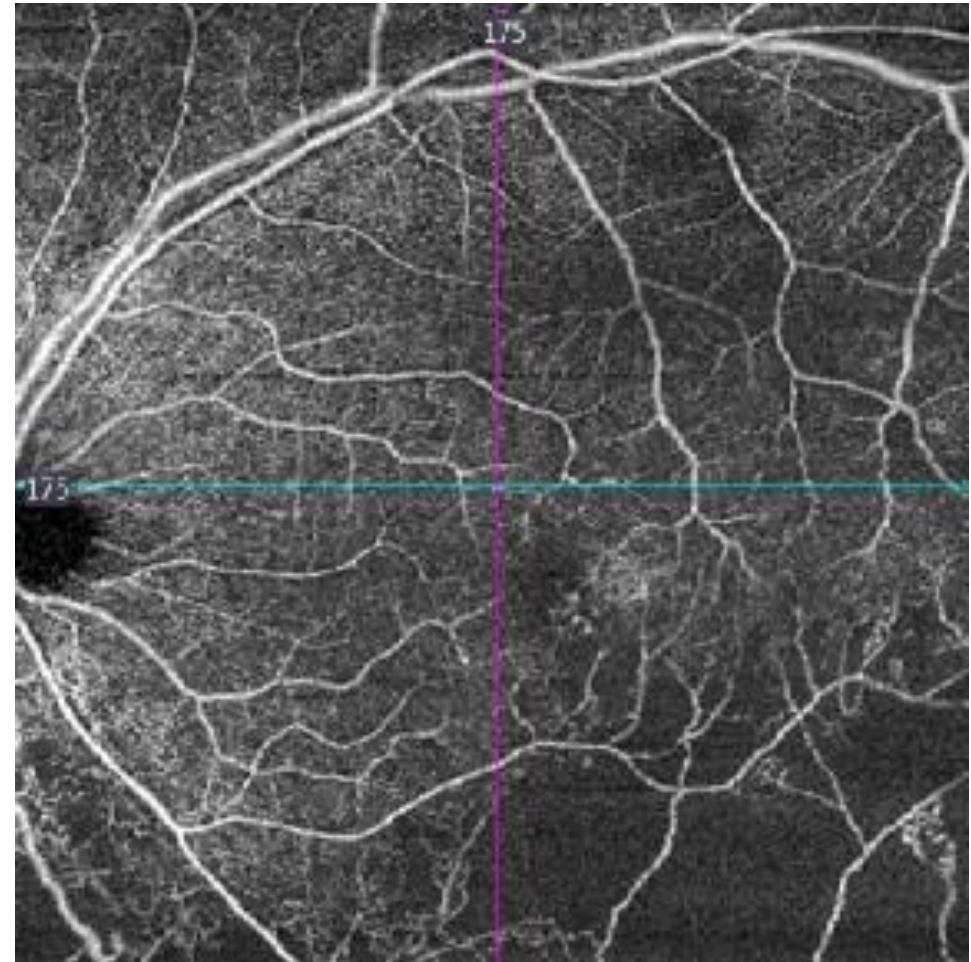


$$6 \times 6\text{mm} = 36 \text{ mm}^2$$

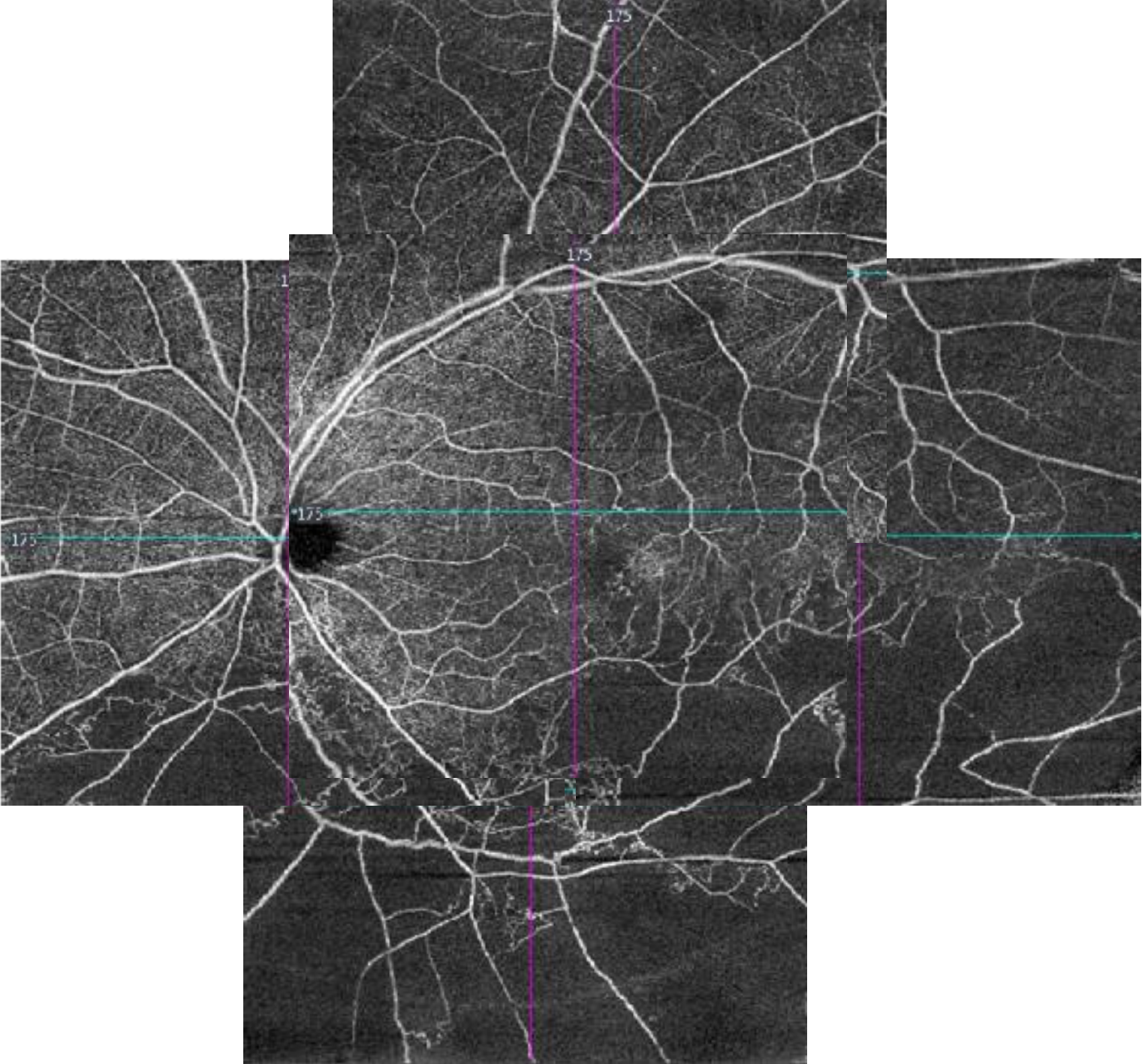


$$8 \times 8\text{mm} = 64 \text{ mm}^2$$



Zeiss 9.5 Software

Collage of 5 8 x 8 mm
OCT-A Scan s



Zeiss OCT-A 5000 9.5 Software – Macular

- Macular Scans
 - 512 x 128 Cube
 - 200 x200 Cube
 - HD 1 Line Scan x 100
 - HD 21 Line Scan
 - HD Cross
 - HD Raster 1 or 5
- OCT – A
 - 3 x 3 mm
 - 6 x 6 mm
 - 8 x 8 mm
- Macular Thickness R/L or OU
- Macular Change analysis
- Single eye summary
- Pano-Map
- 3 D visualisation
- En Face Analysis
- RPE analysis
 - RPE change analysis
- Advanced visulisation

Zeiss 9.5 – Other Scans

- Optic Disc cube 200 x 200
- Anterior Segment
 - Line Scan
 - Cube Scan
 - HD Angle
- Anterior Segment Lens
 - Angle to Angle Scan
 - Pachymetry, anterior chamber dept measurements
 - HD Cornea
- RNFL analysis
 - RNFL Change analysis
 - Glaucoma progression
 - Disc analysis
- Macular Ganglion Cell From Macular cube
 - Change analysis over time
- Pachymetry map