

VISIONIX
The Vision of Future

Vx120

T: 01923 233980

E: sales@graftonoptical.com

 **Grafton Optical**

Vx120

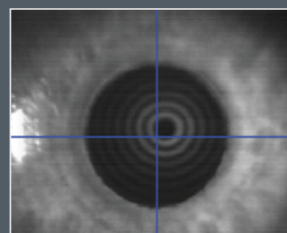
The new diagnostic tool :

First all combined device (Refraction - keratometry - aberrometry - topography - pupillometry - tonometry - pachymetry) with fully automated measurement



Surgery

- Cataract surgery
IOL selection, Internal spherical aberration, pupil center determination
- Refractive surgery
Follow-up...



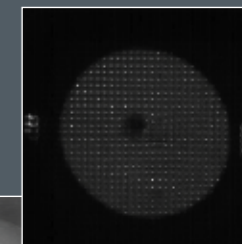
Pupillometry, photopic and scotopic results



Proven technology

Global optics diagnostic

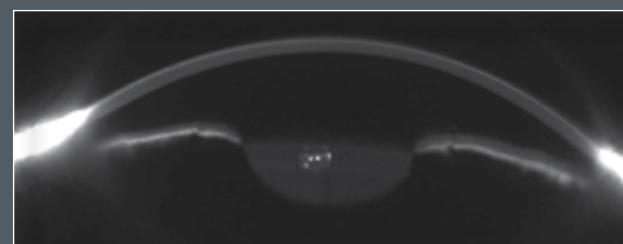
- Cataract detection
- Dry eye diagnosis
- Accomodation measurement



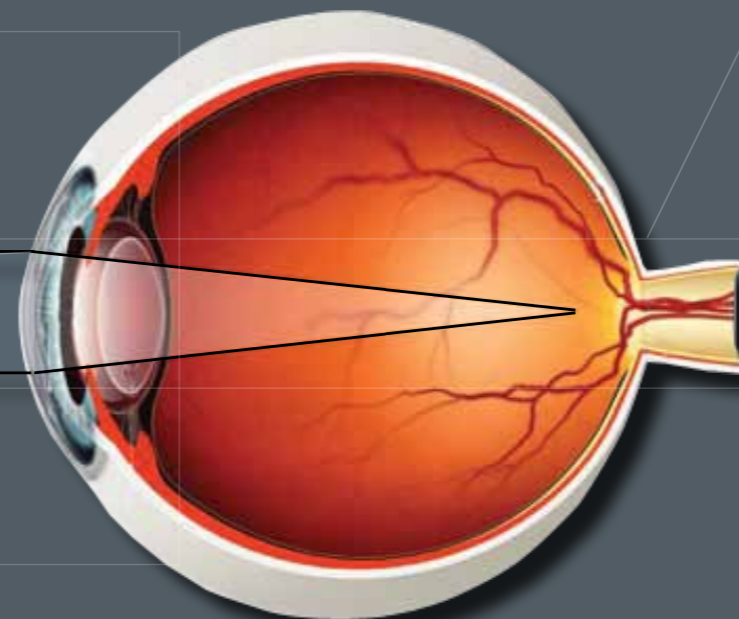
Cataract level analysis



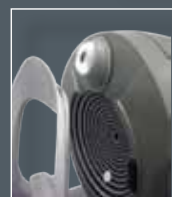
Depth of focus analysis



Scheimpflug imaging, anterior segment analysis
Corneal thickness measurement, iridocorneal angle



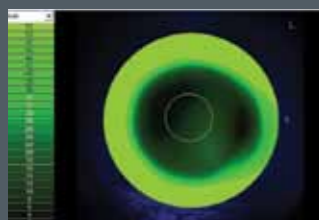
Glaucoma diagnosis



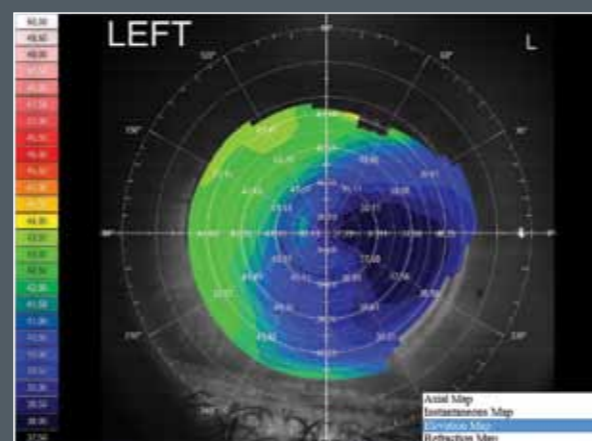
Full automated non-contact tonometer
Soft air puff

Corneal study

- Corneal pathology (keratoconus)
- Contact lens fitting



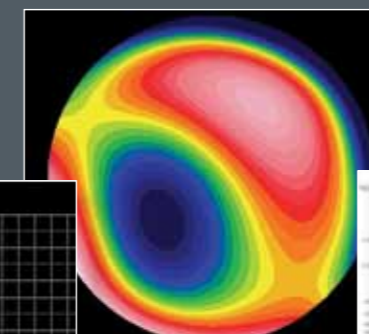
Contact lens software included



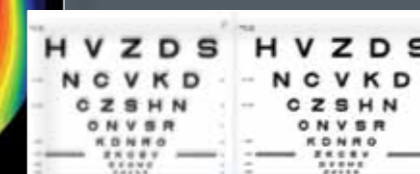
Full automated topographer, placido rings technology

Refraction and Visual performance

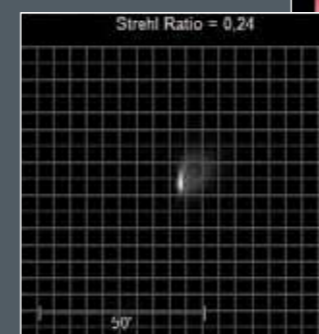
- Day and night Vision
- Internal, external and total aberrometry



Wavefront maps...



Visual acuity simulations



Full automated aberrometer
PSF and Zernicke analysis

Full automated

- Fully automatic 3-D and R/L eye alignments
- 7 types of automatic simultaneous measurements
- Operator independent measurements
- High reproducibility of measurements.

Ultra efficient 3-D alignment

Entirely automatic alignment and measurement allowing :

- Higher reliability of measurements
- Significant time saving
- Great confort of use.

Technical specifications

General	
Dimensions	W 320 mm x D 555 mm
Weight	27 kg
Working distance	91 mm
Alignment	XYZ automatic
Display	TFT Screen 10.1" (1024 x 600) Multitouch screen
Observation area	ø 14 mm
Printer	Built-in BW - External colour available
Supply voltage	100/120, 220/240 V AC, 50/60 Hz, 250 W
Medical Directive	CE MDD 93/42/EC amended by 2007/47/EC
Output	RS232 / USB / VGA / LAN

AR & power mapping (Wavefront)

Spherical power range	-20D to + 20D
Cylinder power range	0D to + 8D
Axis	0 to 180°
Measuring area	Min. ø 2.0 mm - Max.7.0 mm (3 areas)
Number of measuring points	1500 points
Acquisition time	0.2 sec
Method	Shack-Hartmann

Pachymetrie, IC angle and pupillometry

Method	Scheimpflug
Pachymeter Range	150-1300 µm
Pachy Resolution	+/- 1 micron
IC angle range	0°-60°
IC Resolution	0.1°
Pupil Illumination	Blue light 455nm
Retro illumination	



Corneal topography	
Number of rings	24
Number of measuring points	6.144
Number of analysed points	More than 100 000
Diameter of covered corneal area at 43D	From 0.33 mm to more than 10 mm
Diopters measured field	From 1 to 100
Repeatability	0.02 D
Method	Placido rings

Tonometer

Measurement range	1 mmHg to 50 mmHg
-------------------	-------------------



T: 01923 233980

E: sales@graftonoptical.com